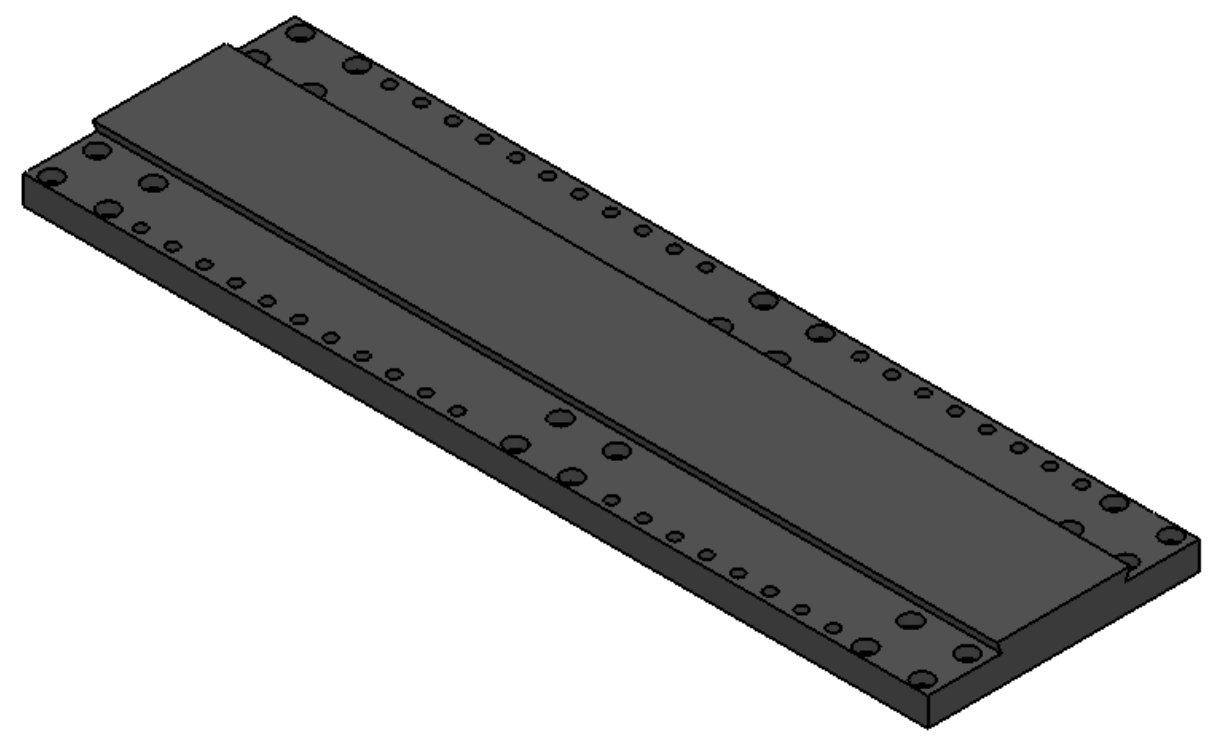
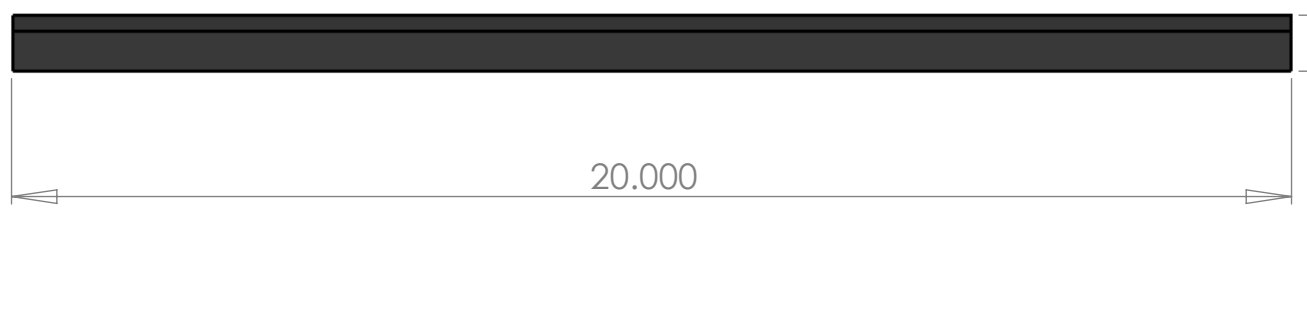
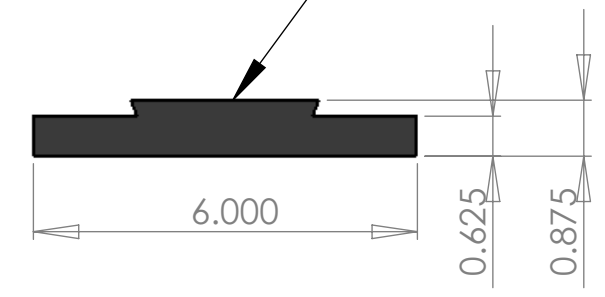


1/4-20 Tapped Hole Pattern Per Paramount VersaPlate



Dovetail, Losmandy "D" Series Compatible



**PROPRIETARY AND CONFIDENTIAL**  
 THE INFORMATION CONTAINED IN THIS DRAWING IS THE SOLE PROPERTY OF RC Optical Systems Inc. ANY REPRODUCTION IN PART OR AS A WHOLE WITHOUT THE WRITTEN PERMISSION OF RC Optical Systems Inc IS PROHIBITED.

16RC ASSEMBLY		UNLESS OTHERWISE SPECIFIED:		NAME	DATE	<b>RC OPTICAL SYSTEMS</b> 1650 SOUTH PLAZA WAY FLAGSTAFF, AZ 86001 (928) 526-5380
		DIMENSIONS ARE IN INCHES TOLERANCES: FRACTIONAL ± ANGULAR: .5 DEG. TWO PLACE DECIMAL ±.01 THREE PLACE DECIMAL ±.005		DRAWN	BE	
		INTERPRET GEOMETRIC TOLERANCING PER:		CHECKED		
		MATERIAL		ENG APPR.		
		FINISH		MFG APPR.		
NEXT ASSY	USED ON			Q.A.		
APPLICATION		DO NOT SCALE DRAWING		COMMENTS:		TITLE:
				Customer Drawing		Dovetail (Mount) Plate, 16RC
				SIZE	DWG. NO.	REV
				<b>B</b>	09-16RC-C1885	NEW
				SCALE: 1:3		SHEET 1 OF 1

